



Non-mydriatric Fundus Camera

Kowa

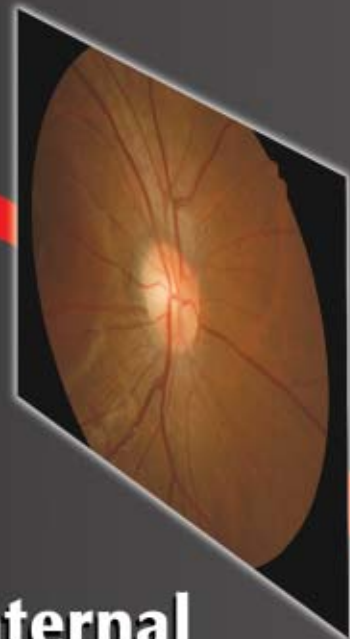
8MEGA

*nonmyd*  $\alpha$ -D III



Technology for Life Science

**NEW**



**Internal  
8 megapixel  
Digital Camera**



**HS**  
Optikmaschinen



Technology for Life Science

Non-mydratric Fundus Camera  
Internal 8 megapixel Digital Camera

Kowa **nonmyd $\alpha$ -D $\text{III}$**

The nonmyd $\alpha$ -D $\text{III}$  is a compact digital camera that continues Kowa's tradition to fit the new age of electronic imaging technology. Kowa offers speed, reliability and high resolution photographs in a striking design.

### ERGONOMIC DESIGN

The all-in-one compact, lightweight digital fundus camera incorporates advanced technology in an efficient design.

This cost effective design uses intuitive ergonomic operations that makes photographic results easy to capture.

### EASY-TO-USE

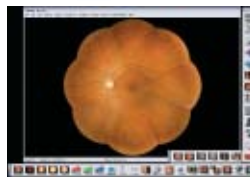
Easy to use controls are located at your fingertips.

The conveniently located controls makes rapid screening easy; all operations can be carried out with the simple touch of a button.

### 9 POINTS INTERNAL FIXATION

The nonmyd $\alpha$ -D $\text{III}$  has two fixation modes that provide up to 9 fixation positions, "Normal" and "Mosaic".

The "Mosaic mode" provides 9 fixation points for a panorama image covering a retinal area of approximately 85 degrees when using the "montage" application integrated in the digital imaging system. When using the "Normal mode" three positions are selectable Central, Disc and Macula.



### HIGH RESOLUTION



The nonmyd $\alpha$ -D $\text{III}$  utilizes an internal 8 megapixel digital camera.

The high resolution digital camera provides detailed, diagnostic quality images with Kowa's exclusive "Aspherical" optical system.

### PLUG-AND-PLAY



The nonmyd $\alpha$ -D $\text{III}$  connects to the computer through a USB interface that makes set-up and operations plug and play.

The camera can be used with either a desktop or notebook computer with the Kowa Portable VK-2 digital imaging system. Regardless of the volume of photographs taken, the nonmyd $\alpha$ -D $\text{III}$  & Kowa Portable VK-2 lets you store, restore and compare data with ease. Shoot and forget allows easy image storage and automatic image saving.

### Specifications

Picture angle	45° / 30° two angles (optical)
Shooting mode	Normal / Mosaic (electrically switched)
Effective pupil diameter	φ 4mm (small pupil mode: φ 3.5mm)
Working distance	30mm (distance of examined eye to front end of objective lens)
Compensation range of examined eye	Without compensation : -15m <sup>-1</sup> (D)~+13m <sup>-1</sup> (D) Compensation - : -12m <sup>-1</sup> (D)~ -32m <sup>-1</sup> (D) Compensation + : +10m <sup>-1</sup> (D)~ +40m <sup>-1</sup> (D)
Focusing	Split luminous bars coincidence
Working distance adjustment	2 luminous dots indication type (anterior segment / fundus electrically switched)
Camera	8.3 megapixel CCD camera
Monitor	5.7 inch LCD monitor

Interface	USB2.0
Internal fixation target	Normal: 3 positions (Central, Disc, Macula) Mosaic: 9 positions
External fixation target	Red light (option)
Optical head base moving distance	Movable 40mm forward / backward Movable 100mm leftward / rightward Movable 30mm vertically (electric)
Chin rest moving distance	Movable 60mm (electric)
Power Supply	Input: AC100V — AC240V 50 / 60Hz automatic voltage selection Power consumption: 150VA (normal) / 250VA (maximum)
Dimensions	310(W)× 505(D)× 462(H)mm
Weight	22kg / 48lbs.

Images of the monitor are compositions.  
nonmyd is a registered trademark of Kowa Company, Ltd. in the United States, Germany, Japan and other countries.  
Specifications and appearances are subject to change without notice.

Distribution name: KOWA nonmyd $\alpha$ -D $\text{III}$

**HS**  
**Optikmaschinen**

Handwerkerstraße 14  
48720 Rosendahl-Holtwick  
Tel: 02566/4720  
Fax: 02566/1620  
Email: hsoptikmaschinen@hotmail.com  
www.hs-optikmaschinen.de