



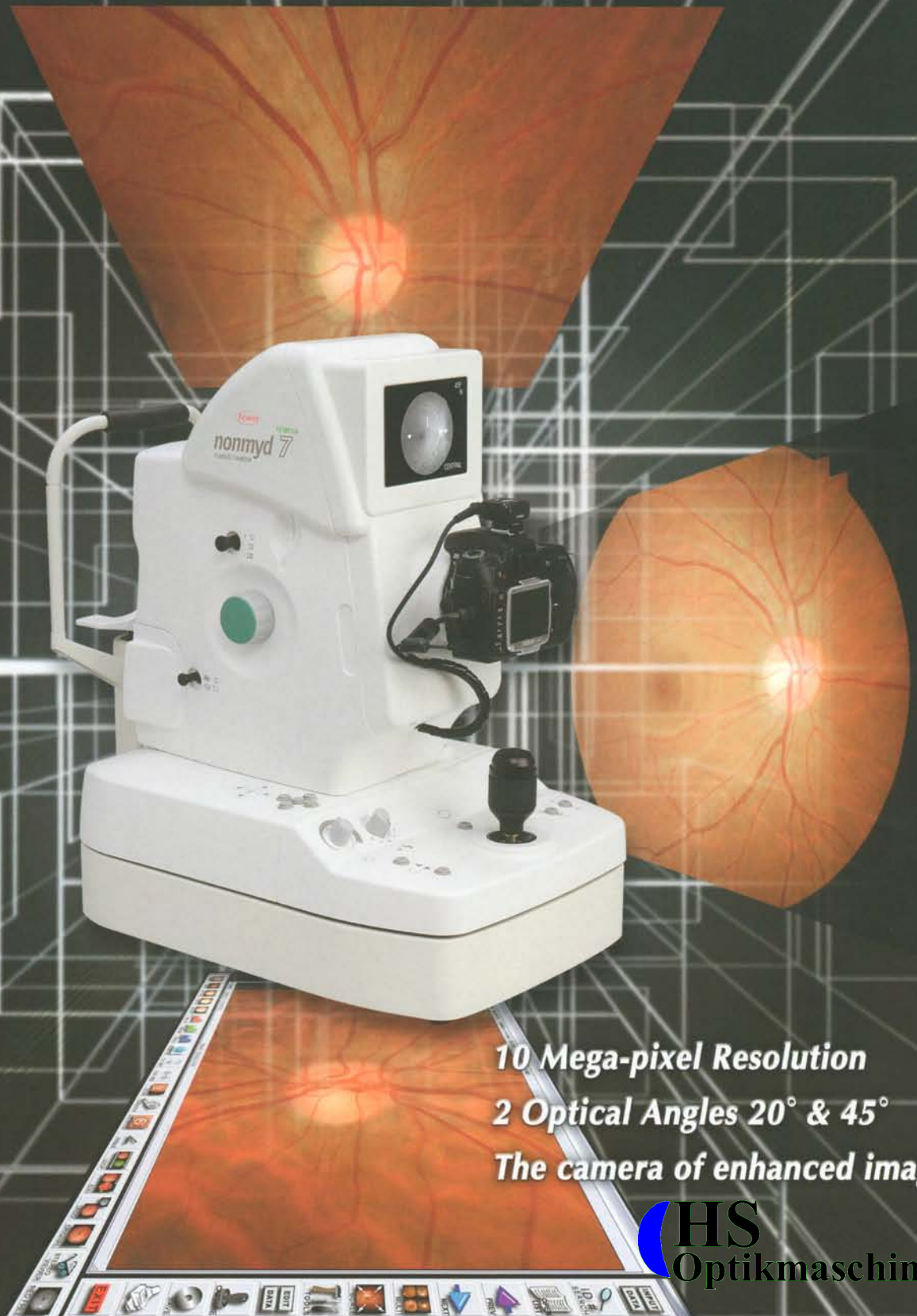
Technology for Life Science

Non-mydratiatic Fundus Camera

Kowa

10 MEGA

nonmyd 7



*10 Mega-pixel Resolution
2 Optical Angles 20° & 45°
The camera of enhanced imaging*

HS
Optikmaschinen



Technology for Life Science

Non-mydriatic Fundus Camera
With 10 Mega-pixel Digital Camera

Kowa nonmyd 7

Kowa nonmyd 7, an easy-to-use fundus camera with the capability of 10 Mega-pixel high-resolution photography.

Sharper, clearer images will guarantee outstanding performance in clinic scenes.



The all-in-one compact, lightweight digital fundus camera employs an advance design in compact technology

This cost effective design uses intuitive ergonomic operations to make getting photographic results easy.



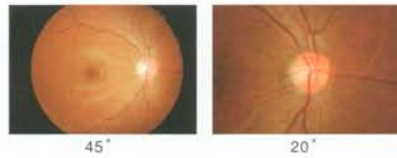
Kowa nonmyd 7 utilizes a 10 Mega-pixel digital camera

The high-resolution digital camera offers high quality images and allows easy image storage.

The easy to attach USB computer interface makes set-up and operations plug and play

Kowa nonmyd 7 is ideally suited to be used with portable notebook computers and the Digital Imaging System KOWA Portable VK-2. Regardless of the volume of photographs taken, nonmyd 7/VK-2 lets you store, recall and compare data with ease that is hard to believe. Furthermore, Kowa nonmyd 7 is flexible to any network environment.

Easy to use control panels located at hand reach
2 optical angles



Easy alignments in 2 steps



Once the alignment of the anterior segment is made, simply press the button in front of the joystick to shift to the fundus alignment.

3 internal fixation targets



Also available, the original **Kowa nonmyd α-D**, elaborated for quick and easy operations in a striking design, with plug-and-play capability, and featuring a built-in 5 Mega-pixel Digital Camera for high quality images.

Specifications

Picture angle	45°/20°two angles (optical)	Monitor	5.5-inch LCD monitor
Working distance	30mm (distance of examined eye to front end of objective lens)	Auto OFF function	With time setting function
Effective pupil diameter	φ4mm (small pupil mode: φ3.7mm)	Optical head base moving distance	Movable 40mm forward/backward Movable 100mm leftward/rightward Movable 30mm vertically (electric)
Compensation range of examined eye	Without compensation:-15mm ⁻¹ (D)~+13mm ⁻¹ (D) -compensation:-11mm ⁻¹ (D)~-33mm ⁻¹ (D) +compensation:+10mm ⁻¹ (D)~+40mm ⁻¹ (D)	Chin rest moving distance	Movable 60mm (electric)
Focusing	Split luminous bars coincidence	Applicable digital camera	Specific Nikon Digital single-lens reflex camera
Working distance adjustment	2 luminous dots indication type (anterior segment/fundus electrically switched)	Power supply	Input: AC100V~AC230V 50/60Hz Power consumption: 200VA (normal)/250VA (maximum)
Internal fixation target	4 fixed dots switching type	Dimensions	310 (W)×504 (D)×548 (H) mm
External fixation target	Red light, blinking (option)	Weight	21kg/46lbs (excluding the attached digital camera back)

Images of the monitor are compositions.
Specifications and appearances are subject to change without notice.

Distribution name: KOWA nonmyd 7



HS
Optikmaschinen

Handwerkerstraße 14
48720 Rosendahl-Holtwick
Tel: 02566/4720
Fax: 02566/1620
Email: hsoptikmaschinen@hotmail.com
www.hs-optikmaschinen.de